

XE-A307**XE-A307 BARCODE DATABASE USING XML**

This guide is intended to demonstrate how to build a barcode database using xml and the PC Link software.

Please download the PC Link software from the following URL:

<http://www.tradenet.sharp.co.uk/tech/download.asp?ID=110963>

Please note the download is in .ZIP format and will need to be uncompressed before you can use it.

Once all the files have been uncompressed, locate the file PC-LINK_A307V.exe and run it.

Load your ECR data on to the SD card

- 1) Insert the SD card into the SD Card Reader located at the front of the till
- 2) Press MODE
- 3) Select 7 (SD Card Mode)
- 4) Press TL/NS
- 5) Select 3 (Folder Control)
- 6) Select 1 (Create Folder)
- 7) Type the text of the folder
- 8) Press TL/NS
- 9) Select 2 (Select Folder)
- 10) Use the arrow keys to highlight the folder you have just created
- 11) Press TL/NS
- 12) Press ESC
- 13) Select 1 (saving)
- 14) Press TL/NS
- 15) Select 1 (Save)
- 16) Select 4 (ALL Program)
- 17) Press TL/NS
- 18) Press TL/NS
- 19) Select 5 (ALL RAM DATA)
- 20) Press TL/NS
- 21) Press TL/NS
- 22) Once complete press ESC three times to return to REG Mode

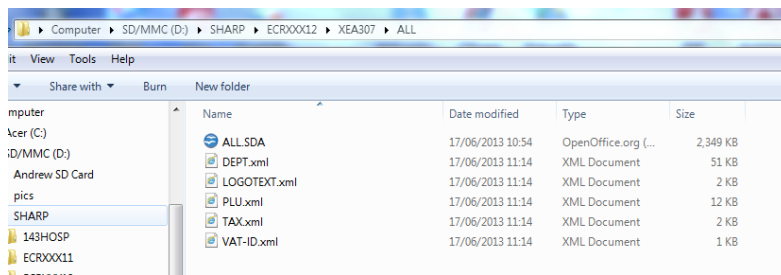
XE-A307

Load data from SD Card into PC Link

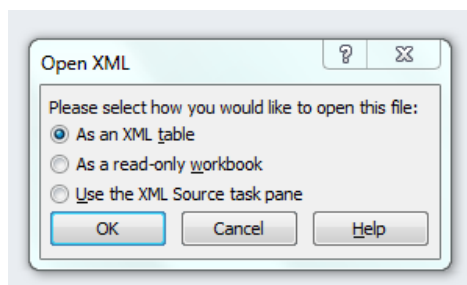
- 1) Insert your SD Card in to your SD card reader on your PC
- 2) Select File > Export/Import
- 3) Select the Folder (Created on the till as in the previous instructions)
- 4) Click Import
- 5) Select YES

Create the xml file

- 1) Close the PC Link software
- 2) Navigate your way to the folder on the SD Card (search for *.xml)

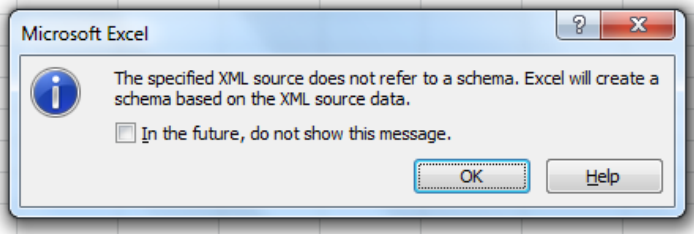


- 3) Right click 'PLU.xml'
- 4) Select open with
- 5) Select Microsoft Excel
- 6) Click the OK button



- 7) Click the OK button (this will then produce an Excel file)

XE-A307



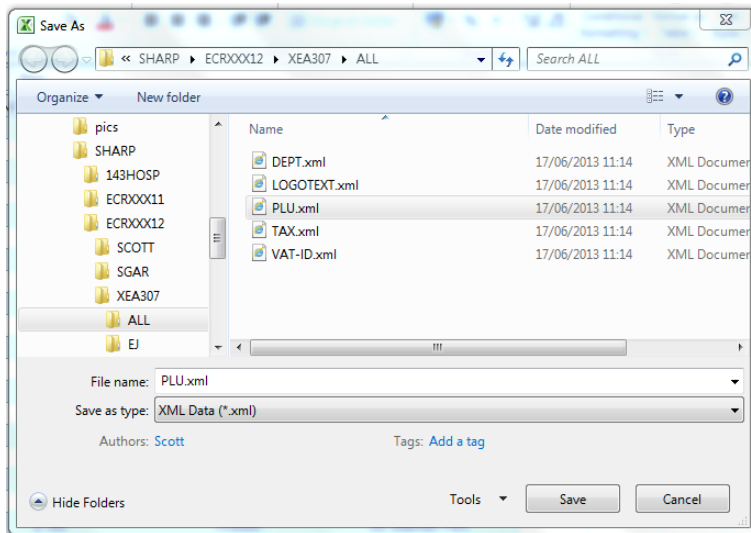
The screenshot shows the Microsoft Excel interface with a spreadsheet. The active cell is A1, containing the formula =PLU_CODE. The spreadsheet contains the following data:

	PLU_CODE	TYPE	DEPARTMENT	AUTO_DELETE_BY_Z1	ENTRY_TYPE	PRICE	TEXT
6	5	0	1	No	Preset	0	PLU00005
7	6	0	1	No	Preset	0	PLU00006
8	7	0	1	No	Preset	0	PLU00007
9	8	0	1	No	Preset	0	PLU00008
10	9	0	1	No	Preset	0	PLU00009
11	10	0	1	No	Preset	0	PLU00010
12	11	0	1	No	Preset	0	PLU00011
13	12	0	1	No	Preset	0	PLU00012
14	13	0	1	No	Preset	0	PLU00013
15	14	0	1	No	Preset	0	PLU00014
16	15	0	1	No	Preset	0	PLU00015
17	16	0	1	No	Preset	0	PLU00016
18	17	0	1	No	Preset	0	PLU00017
19	18	0	1	No	Preset	0	PLU00018
20	19	0	1	No	Preset	0	PLU00019
21	20	0	1	No	Preset	100	MARKER PEN
22	21	0	1	No	Preset	0	PLU 21
23	3.47437E+12	1	5	No	Preset	100	Pen
24	4.00782E+12	1	1	No	Preset	99	Marker Pen
25	4.0099E+12	1	1	Yes	Preset	100	SNACKS
26	4.0608E+12	1	1	Yes	Preset	199	SNACKS
27	4.97402E+12	1	1	Yes	Preset	500	DPT_0_1
28	4.98434E+12	1	2	Yes	Preset	199	Japanese staple
29	5.00036E+12	1	1	Yes	Preset	125	FISHERMAN'S
30	5.02462E+12	1	2	No	Preset	129	water
31	50357291	1	1	No	Preset	125	DPT_0_1
32	4.00476E+12	1	2	No	Preset	126	EDDING 360 RED

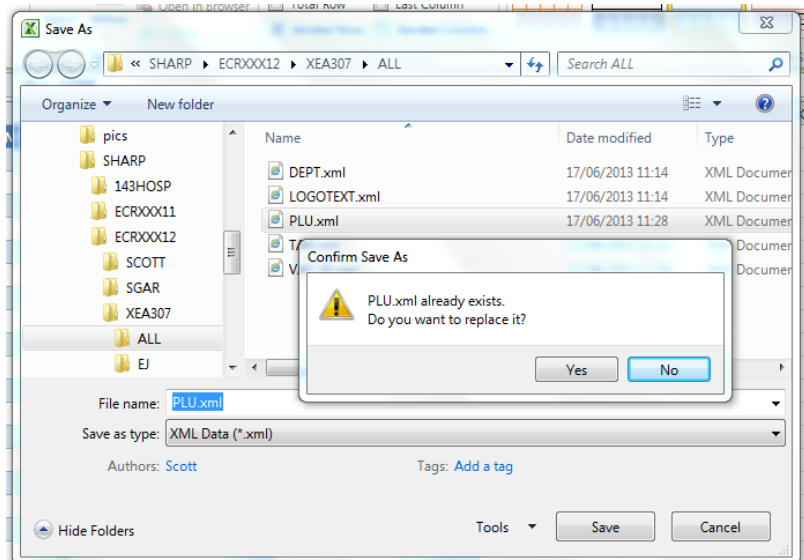
- 8) Use either a USB or Keyboard wedge scanner to scan the barcodes into the barcode field in Excel
- 9) *Alternative to Step 8 above: If barcode data exists in a separate spreadsheet, they can be copied and pasted into the barcode field in Excel**

XE-A307

- 10) Click FILE
- 11) Click SAVE AS
- 12) Set 'Save as type' to XML DATA (*.xml)
- 13) Navigate your way to the folder on the SD card and select PLU.xml

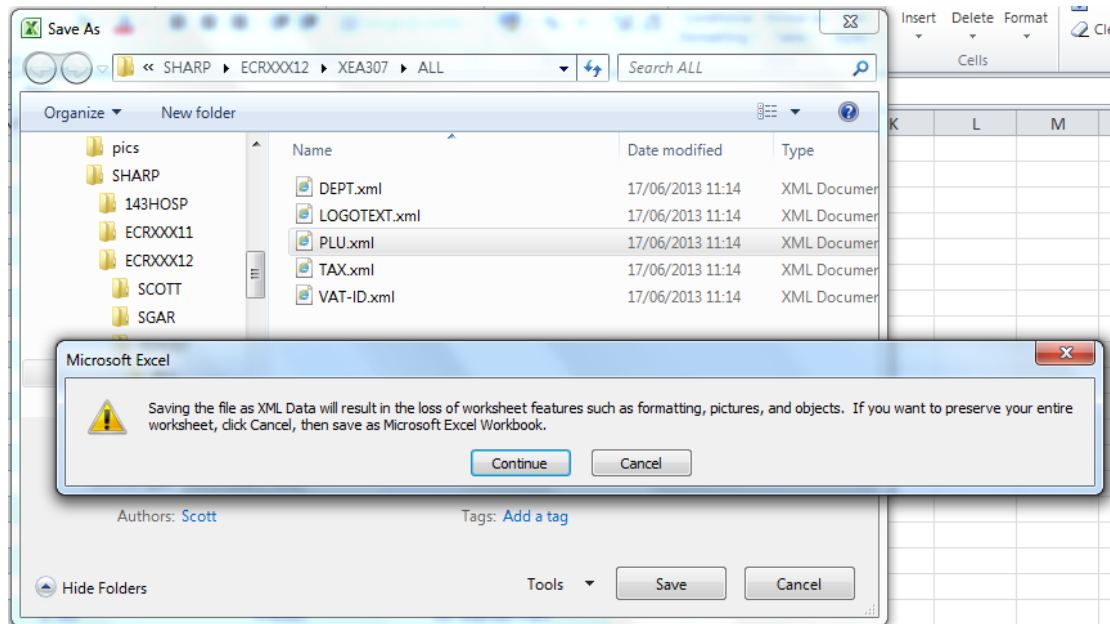


- 14) Click on SAVE to replace the previous PLU.xml file



XE-A307

15) Click continue



16) Close Excel (it will prompt to save again but this is not necessary)

*If there are any errors in a barcode format or if any barcodes are incorrect, this will cause an error. Please see table on page 6 for barcode types.

Load data to SD Card from PC Link

- 1) Open PC Link software
- 2) Ensure your PLU's are in the PLU/EAN tab
- 3) Select File
- 4) Select Export/Import
- 5) Select the folder where you want to save the data to (Created earlier)
- 6) Once the folder is selected, Click on Export
- 7) Click Yes

Your data will now be saved on to the SD card and ready to be loaded on to the till

Load from SD Card to Till

- 1) Insert SD Card into the till

XE-A307

- 2) Press MODE
- 3) Select 7 (SD Card Mode)
- 4) Select 3 (Folder Control)
- 5) Select 2 (Select Folder)
- 6) Use the arrow keys to highlight the correct folder
- 7) Press TL/NS
- 8) Press ESC
- 9) Select 2 (Loading)
- 10) Select 2 (All Program)
- 11) Select 1 (OK)
- 12) Press TL/NS
- 13) Once complete press ESC three times to return to REG Mode

Barcode types (column 2 in XML file) with examples below.

If an EAN 13 is set for 'Type 2' in column 2 of the XML file, this will cause an error and you will be unable to scan the barcode, so please make sure the correct barcode type is assigned.

- 0 = PLU CODE
- 1 = EAN 13
- 2 = EAN 8
- 5 = UPC A
- 6 = UPC E
- 7 = ITF 14

Example of different barcode types

EAN 13



UPC A



ITF 14



EAN 8



UPC E

