

Opzione - Option

ECR 7190 - ECR 7790 - ECR 7790LD

CATALOGO PARTI DI RICAMBIO - SPARE PARTS CATALOGUE

Code Y119030-3

**PUBBLICAZIONE EMESSA DA:
PUBLICATION ISSUED BY:**

Olivetti S.p.A.

77, Via Jervis - 10015 Ivrea (Italy)

Copyright © 2018, by Olivetti

All right reserved

Printed in Italy by:

IMPORTANTE

PUBBLICAZIONE REDATTA DA OLIVETTI (GESTIONE RICAMBI E SCORTE).
QUESTO CATALOGO È L'UNICO DOCUMENTO AL QUALE FARE RIFERIMENTO
PER ORDINARE LE PARTI DI RICAMBIO.

IMPORTANT

THIS DOCUMENT WAS WRITTEN BY OLIVETTI (SPARE PARTS DEPARTMENT).
IT REPRESENTS THE ONLY DOCUMENT TO WHICH REFERENCE MAY BE MADE
FOR ORDERING SPARE PARTS.

ECR 7190 - ECR 7790 ECR 7790LD

INDICE

COMPLESSIVO ECR 7190	4
COMPLESSIVO ECR 7790	6
COMPLESSIVO ECR 7790LD	8
INDICE GENERALE DEI CODICI	10

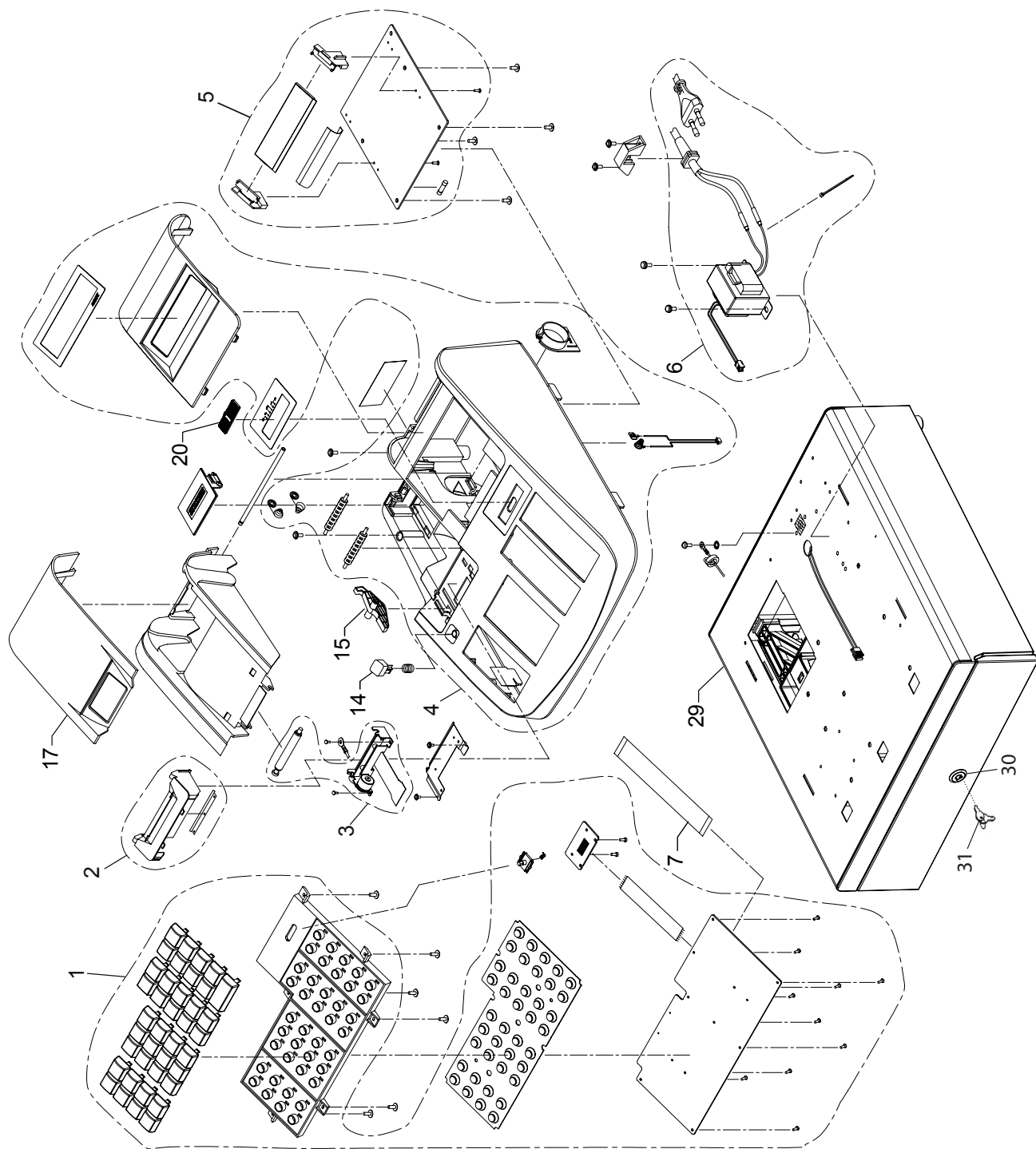
INDEX

EXPLODED VIEW ECR 71904
EXPLODED VIEW ECR 77906
EXPLODED VIEW ECR 7790LD8

INDEX OF CODES 10

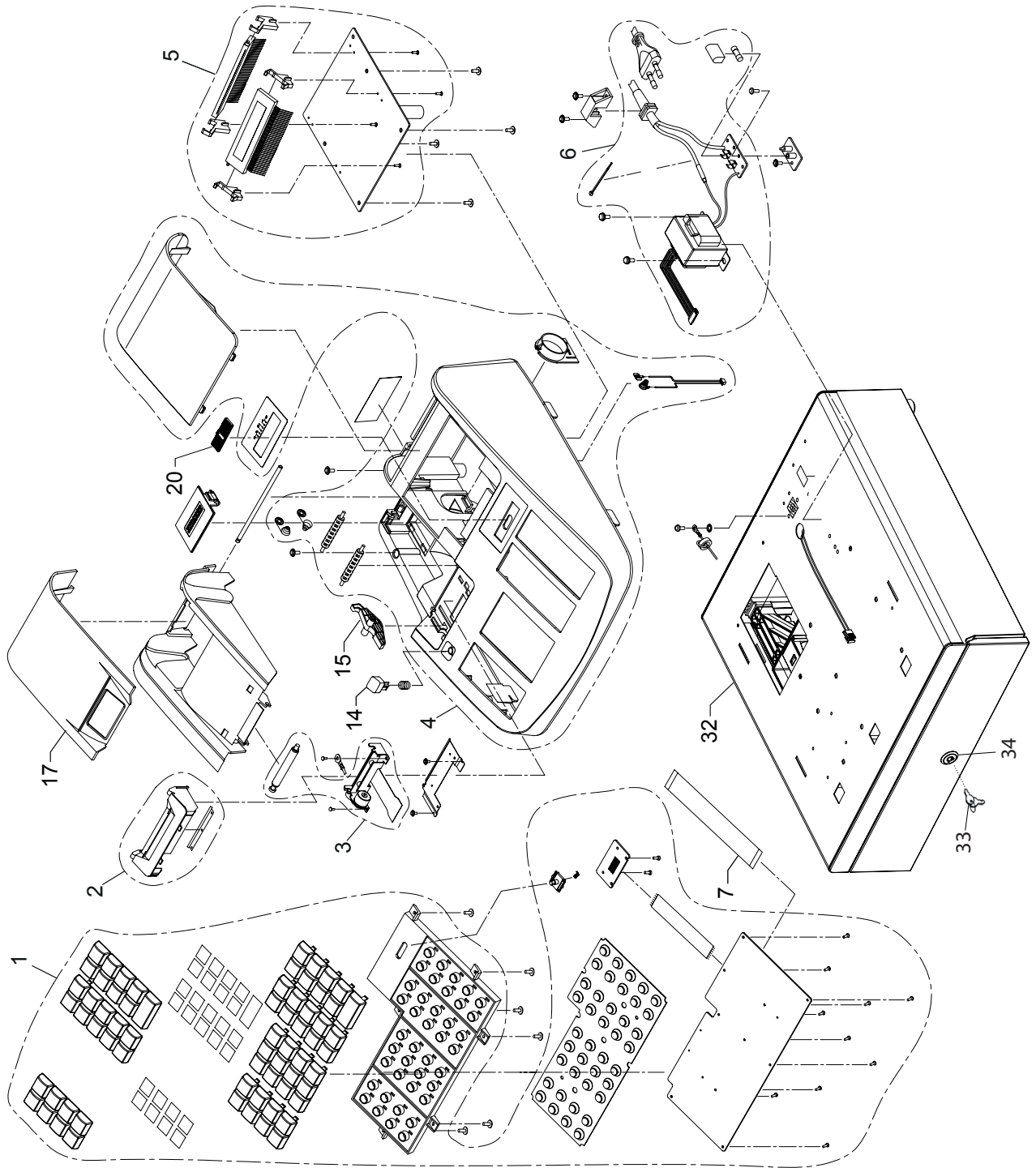
**COMPLESSIVO
EXPLODED VIEW****ECR 7190**

REF.	CODE	DESCRIZIONE	DESCRIPTION
1	AVGR28553 Y	GR.TASTIERA	KEYBOARD UNIT
2	AVGR28554 M	GR.TAGLIERINA ECR 7190	ECR7190 PRINTER BARRIER SET
3	AVGR28555 R	GR.STAMPANTE	PRINTER HEAD ASSY
4	AVGR28556 V	GR.COPERTURA	TOP CASE SET
5	AVGR28557 Z	GR.PIASTRA BASE	MAIN PWB UNIT
6	AVGR28558 N	GR.ALIMENTATORE	POWER SUPPLY UNIT
7	AVGR28559 J	CAVO FLAT	FFC CABLE
14	AVGR28561 R	TASTO	EJECT BUTTON
15	AVGR28562 V	LEVA	EJECTOR ARM
17	AVGR28563 Z	COPERCHIO	PRINTER COVER
20	AVGR28564 N	CURSORE	SLIDE BUTTON
29	AVGR28565 J	GR.CASSETTO	CASH DRAWER
30	AVGR12087 Q	NOTTOLINO	CAM LOCK
31	AVGR01977 Y	SET CHIAVI	CAM LOCK KEY SET



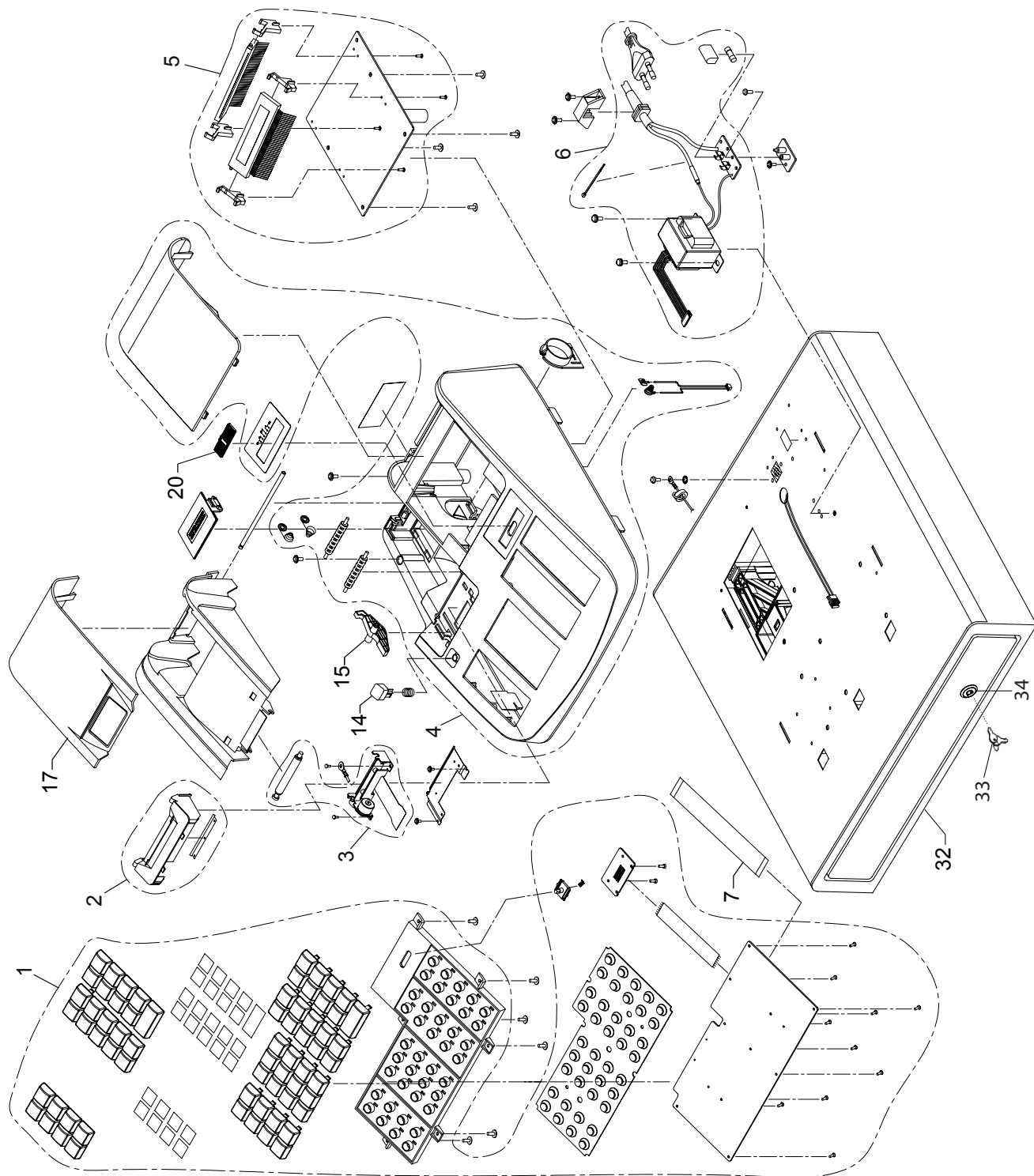
**COMPLESSIVO
EXPLODED VIEW****ECR 7790**

REF.	CODE	DESCRIZIONE	DESCRIPTION
1	AVGR28566 W	GR.TASTIERA	KEYBOARD UNIT
2	AVGR28567 S	GR.TAGLIERINA ECR 7790	ECR7790 PRINTER BARRIER SET
3	AVGR28555 R	GR.STAMPANTE	PRINTER HEAD ASSY
4	AVGR28568 P	GR.COPERTURA	TOP CASE SET
5	AVGR28569 K	GR.PIASTRA BASE	MAIN PWB UNIT
6	AVGR28570 R	GR.ALIMENTATORE	POWER SUPPLY UNIT
7	AVGR28559 J	CAVO FLAT	FFC CABLE
14	AVGR28571 J	TASTO	EJECT BUTTON
15	AVGR28562 V	LEVA	EJECTOR ARM
17	AVGR28572 W	COPERCHIO	PRINTER COVER
20	AVGR28573 S	CURSORE	SLIDE BUTTON
32	AVGR28574 P	GR.CASSETTO	CASH DRAWER
33	AVGR01977 Y	SET CHIAVI	CAM LOCK KEY SET
34	AVGR12087 Q	NOTTOLINO	CAM LOCK



**COMPLESSIVO
EXPLODED VIEW****ECR 7790LD**

REF.	CODE	DESCRIZIONE	DESCRIPTION
1	AVGR28566 W	GR.TASTIERA	KEYBOARD UNIT
2	AVGR28575 K	GR.TAGLIERINA ECR 7790LD	ECR7790LD PRINTER BARRIER SET
3	AVGR28555 R	GR.STAMPANTE	PRINTER HEAD ASSY
4	AVGR28568 P	GR.COPERTURA	TOP CASE SET
5	AVGR28569 K	GR.PIASTRA BASE	MAIN PWB UNIT
6	AVGR28570 R	GR.ALIMENTATORE	POWER SUPPLY UNIT
7	AVGR28559 J	CAVO FLAT	FFC CABLE
14	AVGR28571 J	TASTO	EJECT BUTTON
15	AVGR28562 V	LEVA	EJECTOR ARM
17	AVGR28572 W	COPERCHIO	PRINTER COVER
20	AVGR28573 S	CURSORE	SLIDE BUTTON
32	AVGR28576 X	GR.CASSETTO	CASH DRAWER
33	AVGR01977 Y	SET CHIAVI	CAM LOCK KEY SET
34	AVGR06042 K	NOTTOLINO	CAM LOCK



INDICE GENERALE DEI CODICI

INDEX OF CODES

INDICE GENERALE DEI CODICI

INDEX OF CODES

CODICE CODE	PAGINA PAGE	CODICE CODE	PAGINA PAGE	CODICE CODE	PAGINA PAGE
AVGR01977 Y	4, 6, 8				
AVGR06042 K	8				
AVGR12087 Q	4, 6				
AVGR28553 Y	4				
AVGR28554 M	4				
AVGR28555 R	4, 6, 8				
AVGR28556 V	4				
AVGR28557 Z	4				
AVGR28558 N	4				
AVGR28559 J	4, 6, 8				
AVGR28561 R	4				
AVGR28562 V	4, 6, 8				
AVGR28563 Z	4				
AVGR28564 N	4				
AVGR28565 J	4				
AVGR28566 W	6, 8				
AVGR28567 S	6				
AVGR28568 P	6, 8				
AVGR28569 K	6, 8				
AVGR28570 R	6, 8				
AVGR28571 J	6, 8				
AVGR28572 W	6, 8				
AVGR28573 S	6				
AVGR28573 S	8				
AVGR28574 P	6				
AVGR28575 K	8				
AVGR28576 X	8				

