

V-REGI series

Store support system

Standard package

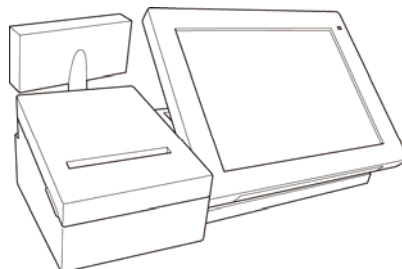
## **Sales management**

### **Stock System Reference Manual**

V-R7000



V-R100



# Contents

<b>1.</b>	<b>Introduction of Stock System.....</b>	<b>5</b>
1.1.	Outline of the system.....	5
1.2.	System data configuration .....	6
1.3.	System Operation.....	7
1.4.	Caution for using System Operation .....	8
<b>2.</b>	<b>Setting stock system .....</b>	<b>10</b>
2.1.	About setting stock.....	10
2.2.	Setting control setting.....	11
2.3.	Stock setting.....	13
<b>3.</b>	<b>Operation stock system.....</b>	<b>16</b>
3.1.	Enter stock .....	16
3.2.	Register items.....	16
3.3.	Stock report .....	17
3.4.	Z and Inventory operation .....	18
<b>4.</b>	<b>More stock system.....</b>	<b>20</b>
4.1.	Stock component setting .....	20
4.2.	Stock Enter setting .....	23
4.3.	Stock Attribute table .....	24
4.4.	Stock unit QTY .....	25
4.5.	Stock Detail data.....	27
<b>5.</b>	<b>Shared Stock system .....</b>	<b>28</b>
5.1.	Outline.....	28
5.2.	Setting for Shared Stock .....	31
5.3.	Operation for Shared Stock.....	32
5.4.	In case of Error.....	33

# Introduction

This manual explains functions and operation of Stock System.

## Take advance notice

The copyrights for this manual, as well as all rights related to the software noted in this manual are the property of CASIO Computer Co., Ltd.

The unauthorized reproduction of this manual in whole or part is prohibited without the express, written permission of CASIO

The content of this manual may change without prior notice due to improvements to the product and/or changes in their specifications.

# SECTION 1

## *Introduction of Stock System*

# 1. Introduction of Stock System

## 1.1. Outline of the system

V-REGI Stock System offer management of stock information at the store.

Stock setting	Set the stock target items, how to work with Z, etc.
Stock Enter	Enter and update current stock.
Register items	Register items and calculate target stock.
Z or Inventory	Clear current stock with Z or Inventory operation.
Stock Report	Print current or old stock.
Stock Detail data	All of detail of stock data for stock enter and register items.

V-REGI Stock System works only for stand-alone.

Stock system automatically works by stock master settings.

With stock master settings, finalize of registration try to calculate/log stock data.

Do not set un-necessary stock setting.

## 1.2. System data configuration

Stock settings:

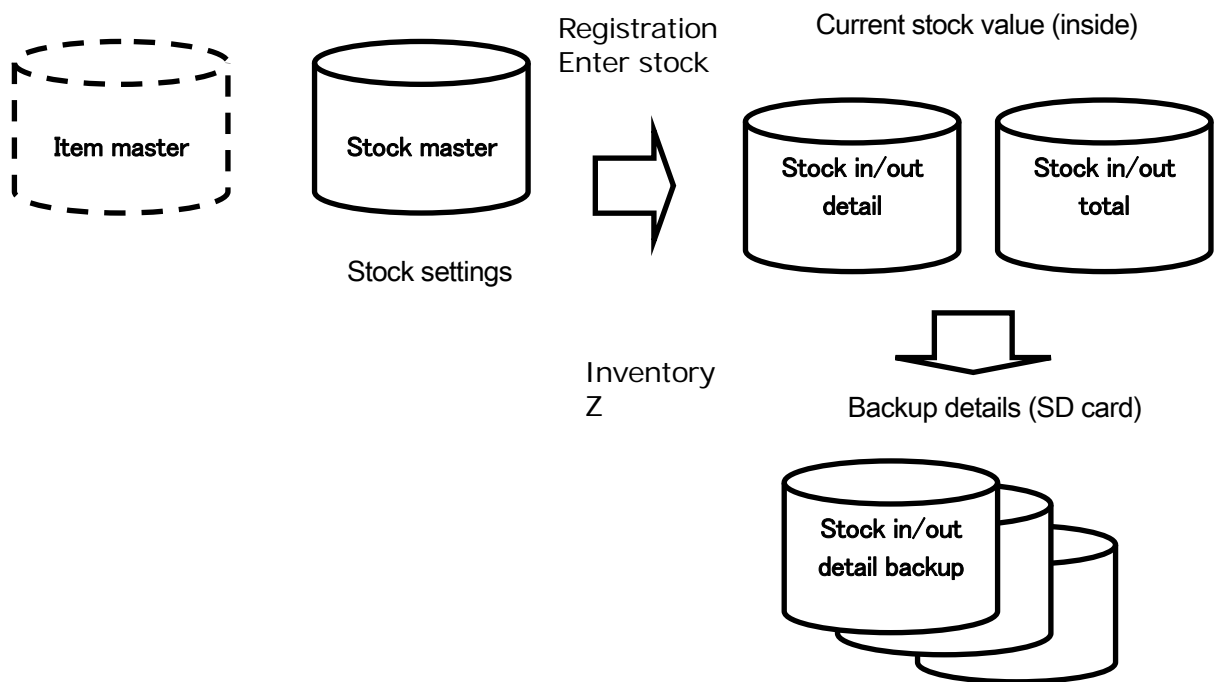
Stock settings set stock configuration. Set stock target items and stock control.

Current stock value:

Current working stock value plus/minus by enter stock and registration, write to stock detail and total.

Backup stock detail:

Inventory (or Z) operation backups stock detail to SD card and clear current stock value.



Stock report value is calculated by current stock value or backup details.

## 1.3. System Operation

Stock operation flow is as below.

### <Install>

Set stock target items by stock setting.

Set stock control setting.

Enter current stocks by Stock enter menu.

### <When stock IN>

Enter stock IN value by Stock enter menu.

### <Registration>

Registration stock items decrease current stock values.

### <Check current stock>

Use stock report to check current stock values.

### <Inventory>

Operate inventory using Update inventory number and re-enter current stock values.

### <Analyze stock detail>

Check and analyze stock IN/OUT detail by SD card Stock in/out detail backup data.

## 1.4. Caution for using System Operation

About target stock items:

Specify stock target items by stock setting. Also set stock component, you can use more complicate stock control. Maximum number of stock target is 10,000 items.

About stock attribute:

Stock attribute can specify different attribute of a stock item. Stock attribute is also primary key for stock master. Stock attribute can be used for color or shape for same stock item for future. Now current stock system does not use stock attribute.

Stock enter:

Stock entered QTY depends on Stock unit qty of stock setting.

Inventory:

Stock system need to be used regularly inventory operation (or clear stock when Z) and re-enter current stock value. After inventory operation, current stock value backups to SD card and cleared current stock value.

Z:

To use stock system as getting registration values only, please set as clear stock when Z. Everyday stock value goes to negative value before Z and after Z it will be zero.

Stock detail:

Analyze stock IN/OUT detail on SD card can be get detail In/Out values. You can use it for your stock information.



# SECTION 2

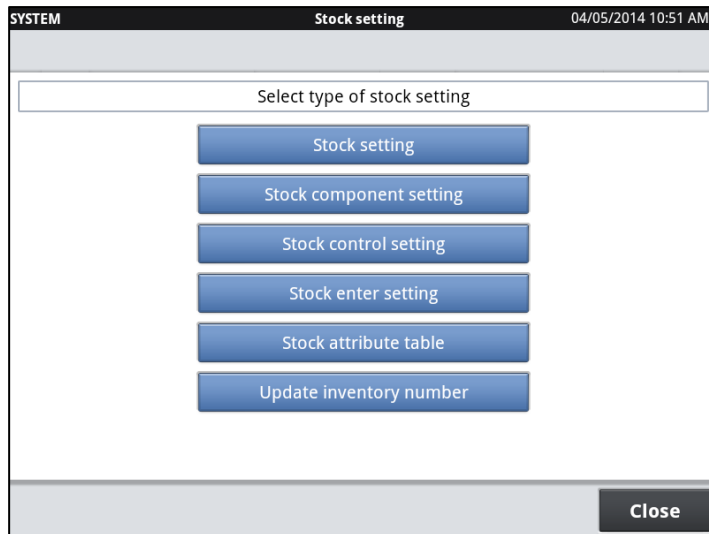
## *Setting Stock System*

## 2. Setting stock system

### 2.1. About setting stock

Before using stock system, please set stock related settings.

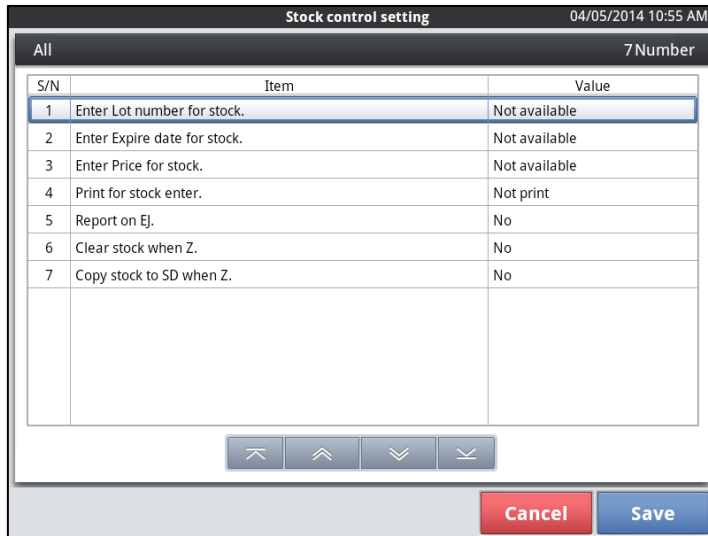
All of stock settings are located at stock setting menu.



## 2.2. Setting control setting

Before using stock system, please set stock control setting.

Stock control has some menu and select contents.



S/N	Item	Value
1	Enter Lot number for stock.	Not available
2	Enter Expire date for stock.	Not available
3	Enter Price for stock.	Not available
4	Print for stock enter.	Not print
5	Report on EJ.	No
6	Clear stock when Z.	No
7	Copy stock to SD when Z.	No

NO.	Menu	Contents
1	Enter Lot number for stock.	Preset as Enter lot# when stock is entered. Lot# will be logged to stock detail data. 0 or no definition = no entry 1: enter lot#
2	Enter Expire date for stock.	Preset as Enter expire date when stock is entered. Expire date will be logged to stock detail data. 0 or no definition : no entry 1: enter expire date
3	Enter price for stock.	Preset as Enter cost when stock is entered. Cost data will be logged to stock detail data. 0 or no definition : no entry 1: enter cost
4	Print for stock enter.	Preset as Prints when stock is entered. 0 or no definition : no print 1: print at every entry 2: print by batch after stock entry is completed
5	Report on EJ.	Stores stock report to EJ. Consecutive number will be incremented when it is stored in EJ. 0 or no definition : does not stored in the EJ 1 : Stored in the EJ
6	Clear stock when Z.	Stock Z report will be performed automaticall when the register apps perform daily Z report. (inventory counter will be incremented) 0 or no definition : no Stock Z is performed 1: perform Z(reset) stock report 2: Not use inventory, Not log stock detail.

7	Copy stock to SD when Z.	<p>Copy Z stock report to the SD card when the register Apps performs daily Z report.</p> <p>0 or no definition: does not copy stock report to the SD card memory.</p> <p>1: Copy stock report to the SD card memory</p>
8	Skip printing sellable stocks on report	<p>The flag of printing sellable stocks on report, or not. If you want the stock report of only semi-products and material, select "Yes".</p> <p>No (0)</p> <p>Yes (1)</p>

## 2.3. Stock setting

Stock setting sets the target items for stock system.

Normally stock target item is come from item master.

Menu	Contents	Explanation
Stock code	Set same as item code or not same as item code.	Set same as item code, calculate stock when sales items. Set not same as item code, use as semi-product or materials. Stock code can not be changed after fixed.
Stock attribute	Select stock attribute.	Select from Stock attribute name (CZB003). Do not set value if not use stock attribute.
Stock type.	Sales item. Semi-product. Material.	Select stock type. If stock code is item code, stock type need to be sales item. If stock code is not sales item code, select semi-product or material. Semi-product or material is used only inside stock system.
Stock name	Character	If stock code is item code, set same as item name. If stock code is not sales item code, set original name for semi-product or material. This name is used for stock report, etc.
Stock unit qty name	Character	Default is QTY. If you need set as PCS, Kg/LB, Litter, etc.

Stock unit qty.	Qty value	Stores value of unit qty. Using stock detail data, this value becomes "Denominator" of STOCKQTY. Example) Receive one head of chicken (whole) but sell by 5pcs, then unit qty becomes 5.
Stock-in 1 name	Character	Pack stock IN unit qty. Stock IN one pack has how many stocks. Example) 1 pack has 4pcs.
Stock-in 1 value	Qty value	
Stock-in 2 name	Character	Case stock IN unit pack. Stock IN one case has how many packs. Example) 1 case has 5packs.
Stock-in 2 value	Qty value	
Stock unit barcode		Not used inside stock system.
Component code	Select stock component	Select stock component if use semi-product or materials.
Stock average		Not used inside stock system.
Stock minimum	Enter value	Use for Less stock report threshold.
Stock price	Enter value	Not used inside stock system.
Un-usable flag	Usable Un-usable	Stop stock enter operation. Not related registration.

# SECTION 3

## *Operation Stock System*

### 3. Operation stock system

#### 3.1. Enter stock

Entering stock enters current stock plus/minus values. As default menu is prepared Normal Stock IN/OUT, and Normal Stock Override. Select target stock item and touch Qty area, enter plus/minus value. After entered value, Current stock value will be changed. Pack and Case area will be shown for stock items which are presented Pack/Case value and name.

Normal Stock IN/OUT	Current stock is update by the value calculated with entered plus/minus value. In/Out enter operation.
Normal Stock Override	Current stock is override by entered value. Inventory operation.

The screenshot shows the 'Normal Stock IN' application interface. The title bar indicates the time is 5/4/14 1:29 PM. The main area is divided into two sections. On the left, there is a table with columns 'S/N', 'Stock Code', 'Stock Name', and 'Stock attribute'. The table contains four rows: 1 (Beer), 2 (Whiskey), 3 (Brandy), and 4 (Vodka). The 'Vodka' row is highlighted. Below the table are four navigation arrows. On the right, there is a 'Normal Stock IN' form with fields for 'Qty', 'Pack', and 'Case'. Below these fields are two rows: 'Entered stock' with a value of 0, and 'Current stock' with a value of 2. At the bottom right, there are two buttons: 'Cancel' (red) and 'Save' (blue).

#### 3.2. Register items

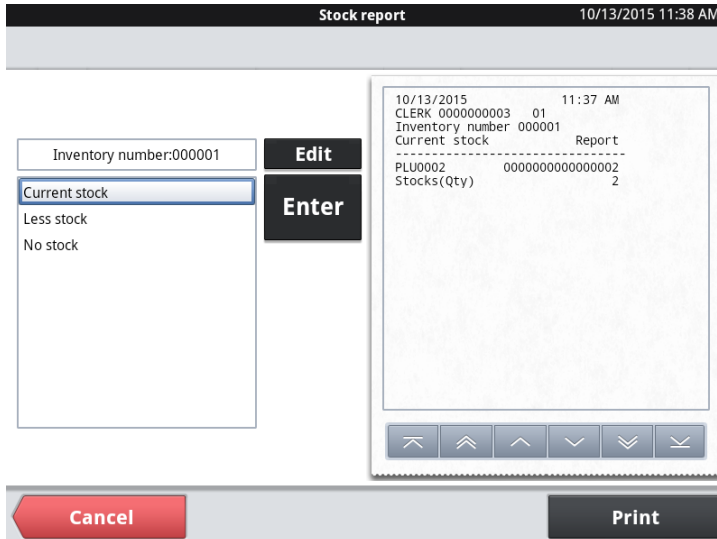
Once register stock items, current stock value will be automatically decreased.



### 3.3. Stock report

Stock report shows current stock, less than minimum stock and zero stock.

Report target items are entered or registered items only. No changed after last inventory items are not shown.



Current stock	All of stock items which are entered or registered by specified inventory number.
Less stock	Less than minimum stock items by specified inventory number.
No stock	Zero or less than zero stock items by specified inventory number.

Using SD card and stock detail, stock report can be specified old inventory number.

### 3.4. Z and Inventory operation

Stock system need to operate inventory check or Z with stock, and copy stock detail data to SD card. If internal stock detail data will be over 10,000 items, stock report can not print correctly.

Inventory or Z stock clears current stock data then it need to enter current stock again.

# SECTION 4

## *More Stock System*

## 4. More stock system

### 4.1. Stock component setting

Stock component provides control of semi-product or materials. To use stock component, add stock items to stock component.

For example, Cheeseburger item has one van, one hamburger and one cheese. Cheeseburger has stock component which has van, hamburger and cheese.

Cheeseburger	One van
	One hamburger
	One cheese

S/N	Stock Name	Stock attribute	Qty
1	Van		1
2	hamburger		1
3	cheese		1

Stock component

S/N	Stock Code	Stock Name
1	0000000000000001	Cheeseburger
2	0000000000001001	Beer
3	0000000000001002	Whiskey
4	0000000000001003	Brandy
5	0000000000001004	Vodka
6	0000000000100001	Van
7	0000000000100002	hamburger
8	0000000000100003	cheese

Stock item setting

Stock component example)

Management materials stock database samples.

Item master (CIA001)

Item code	Item name
0000000000000101	Big Burger
0000000000000102	Cheeseburger

Stock master (CZA001)

Stock code	Stock name	Stock unit qty	Stock in package 1	Stock in package 2	Stock component
0000000000000101	Big Burger	1			000001
0000000000000102	Cheeseburger	1			000002
0000000000010001	Van	1			000000
0000000000010002	Hamburger	1			000000
0000000000010003	Cheese	1			000000
0000000000010004	Lettuce	1			000000

Recipe master (CZA002)

Recipe code	Recipe name
000001	Hamburger
000002	Cheeseburger

Recipe detail master (CZA003)

Recipe code	Item order	Stock code	Recipe unit qty
000001	001	0000000000010001	1
000001	002	0000000000010002	2
000001	003	0000000000010004	0.01
000002	001	0000000000010001	1
000002	002	0000000000010002	1
000002	003	0000000000010003	1
000002	004	0000000000010004	0.01

Sales detail for sales two Big Burgers.

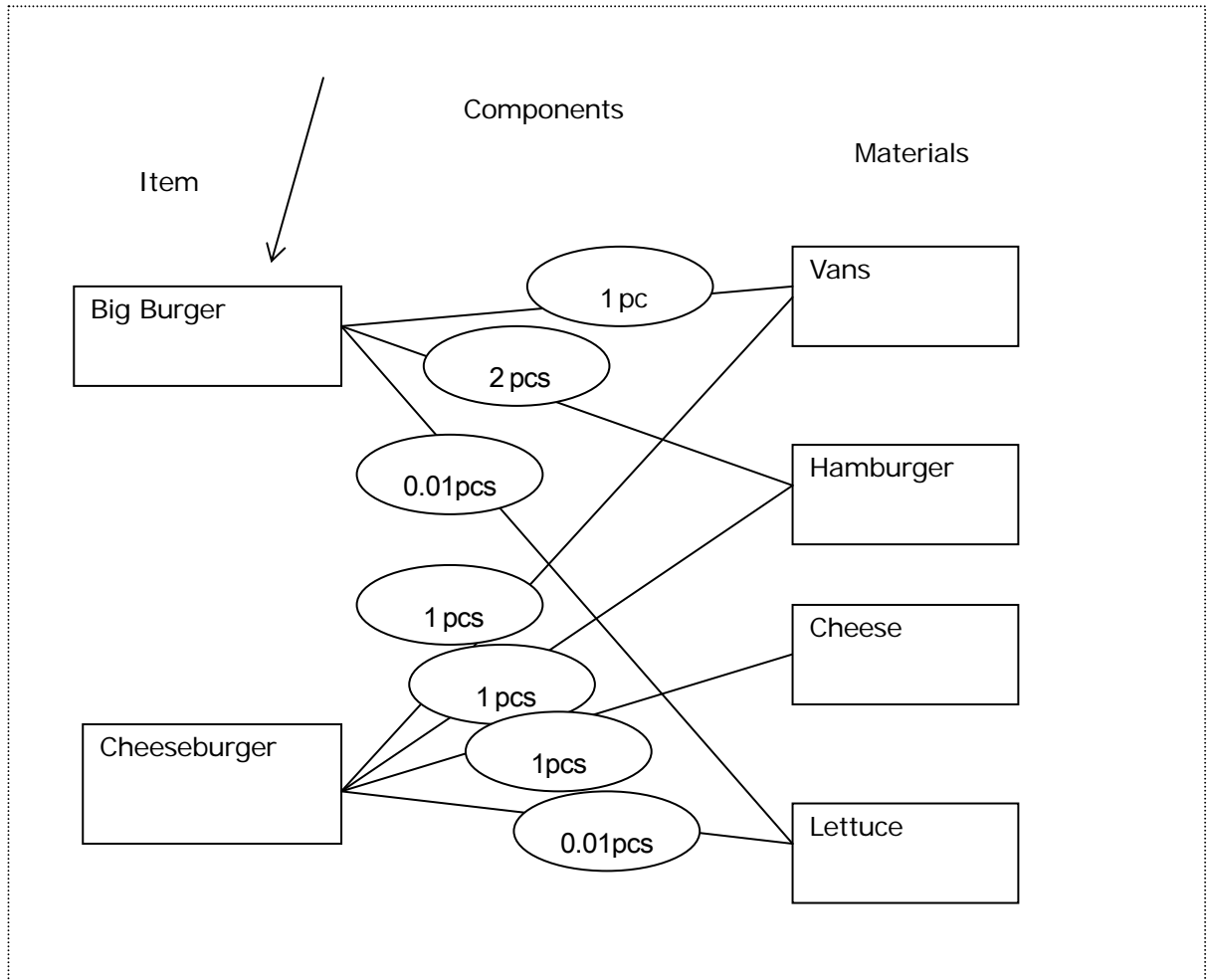
Stock in/out total (CZT001)

Stock code	Stock status	QTY
<b>0000000000000101</b>	<b>00 (Normal)</b>	<b>-2</b>
0000000000010001	00 (Normal)	-2
0000000000010002	00 (Normal)	-4
0000000000010004	00 (Normal)	-0.02

Same as sum of current stock QTY

Stock in/out detail (CZT002)

Stock code	Stock operation type	Stock status	Stock qty
<b>0000000000001001</b>	<b>00 (Registration)</b>	<b>00 (Normal)</b>	<b>-1</b>
00000000000010001	00 (Registration)	00 (Normal)	-1
00000000000010002	00 (Registration)	00 (Normal)	-2
00000000000010004	00 (Registration)	00 (Normal)	-0.01
<b>0000000000001001</b>	<b>00 (Registration)</b>	<b>00 (Normal)</b>	<b>-1</b>
00000000000010001	00 (Registration)	00 (Normal)	-1
00000000000010002	00 (Registration)	00 (Normal)	-2
00000000000010004	00 (Registration)	00 (Normal)	-0.01



## 4.2. Stock Enter setting

Stock enter setting provides variable stock entering menu.

S/N	Stock enter code	Stock enter name
1	000001	Normal Stock IN

Stock enter code	000001
Stock enter name	Normal Stock IN
Stock enter type	In/Out operation
Stock status	Normal Stock
Stock sign	Plus or Minus

Menu	Contents	Explanation
Stock enter name	String	Stock enter menu title
Stock enter type	Stock in/out detail (CZT002) Stock operation type	01: In/Out enter operation. 99: Inventory operation.
Stock status	Stock in/out detail (CZT002) Stock status	00: Normal stock for sales. 01: Returned stock 02: Waste stock 03: Hold stock for not salable 04: In-house consumption
Stock sign	Plus or Minus	0: Plus or minus by operation. 1: Always plus. 2: Always minus.

## 4.3. Stock Attribute table

Stock attribute table provides a setting for stock master attribute.

Stock system does not use stock attribute but other system can use attribute for original meanings as color, size, etc.

Stock system need to be set "000000" if not using stock attribute.



## 4.4. Stock unit QTY

Stock system can use unit QTY for in/out and sales QTY.

Example) Fried chicken sales. Stock in as head and sale packs.

- Sales qty and stock qty ration is 1:n or n:1. (For example, Chicken head has 5 packs)
- Stock IN qty and stock qty ration is 1:n. (Stock IN as "case")
- Select stock IN reason. (Normal IN and store-transfer)

Database)

Item master (CIA001)

Item code	Item name
0000000000000103 *1	Chicken 2pcs pack
0000000000000105	Chicken 5pcs pack

Stock master (CZA001)

Stock code	Stock name	Stock unit qty	Stock in package 1	Stock in package 2	Stock component
0000000000000103 *2	Chicken 2pcs pack				000001
0000000000000105	Chicken 5pcs pack				000002
00000000000010101 *3	Chicken	5	3	6	

Recipe master (CZA002)

Recipe code	Recipe name
000001 *2	Chicken 2pcs
000002	Chicken 5pcs

Recipe detail master (CZA003)

Recipe code	Item order	Stock code	Recipe unit qty
000001 *2	001	00000000000010101	2
000002	001	00000000000010101	6

CZT002 Update Qty

$$= 2 \div 5 = 0.4$$

Sales detail for sales two Big Burgers.

Stock in/out total (CZT001)

Stock code	Stock status	QTY
<b>000000000000103</b>	<b>00 (Normal)</b>	<b>-1</b>
0000000000010101	00 (Normal)	-0.4

Same as sum of current stock QTY

Stock in/out detail (CZT002)

Stock code	Stock operation type	Stock status	Stock qty
<b>0000000000010101</b>	<b>00 (Registration)</b>	<b>00 (Normal)</b>	<b>-1</b>
0000000000010101 *4	00 (Registration)	00 (Normal)	-0.4

- (1) \*1 sales item chicken 2pcs pack.
- (2) \*2 stock one sales use 2 qty by Recipe unit qty.
- (3) \*3 chicken sales 2 and stock unit qty is 5, stock is  $2/5 = 0.4$ .
- (4) \*4 detail logs 0.4.

## 4.5. Stock Detail data

Stock system has stock in/out detail.

Stock detail will be saved on SD card when inventory or Z stock.

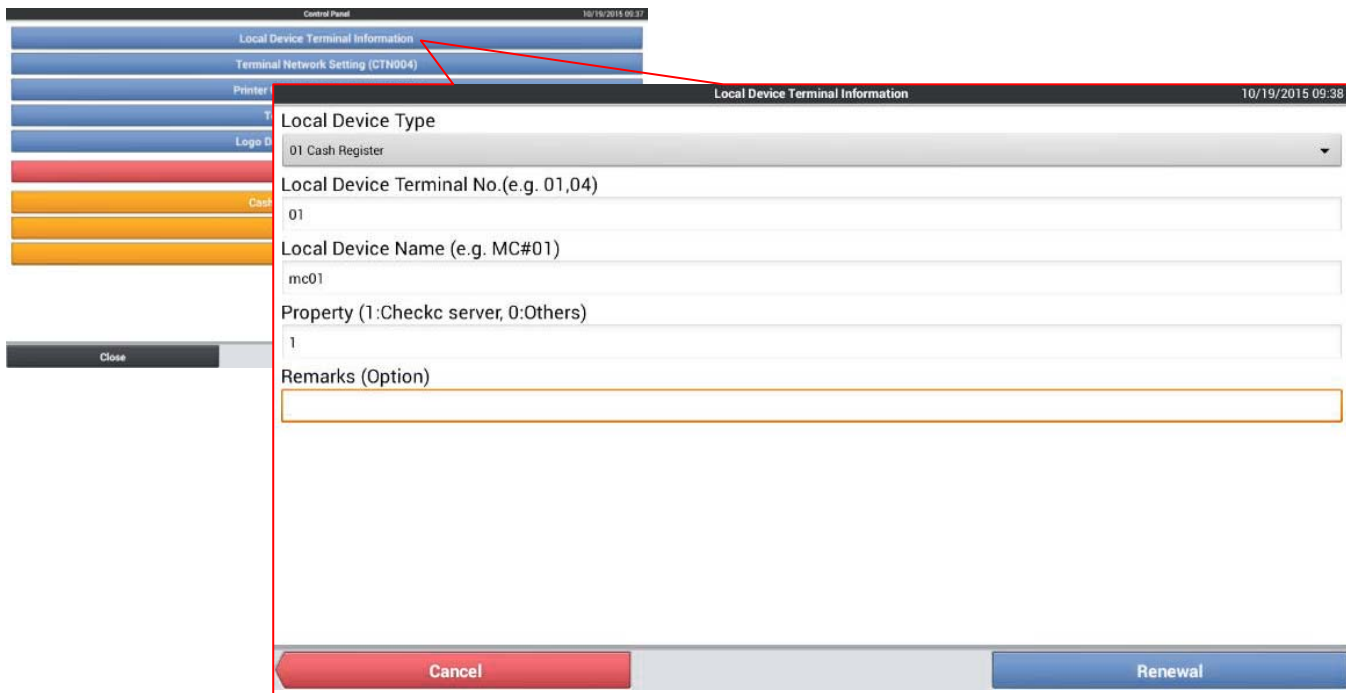
Stock system has no stock detail analyze tools, but connect to customer system can use stock in/out detail data for analyze stock detail.

# 5. Shared Stock system

## 5.1. Outline

Shared Stock is the system which can centralize “Stock in/out detail” and “Stock in/out total” data on Check Master terminal. Shared Stock Master is same terminal as Check Master and Stock Satellite terminal is same as Check Satellite.

Settings can be made at Control Panel/Local Device Terminal Information menu as shown below.



Master terminal is assigned only one unit within inline network. Usually master terminal number will set as 01.

Target data for Shared Stock

Share data	Stock in/out detail Stock in/out total
Not Share data	Stock setting data SD or Storage data

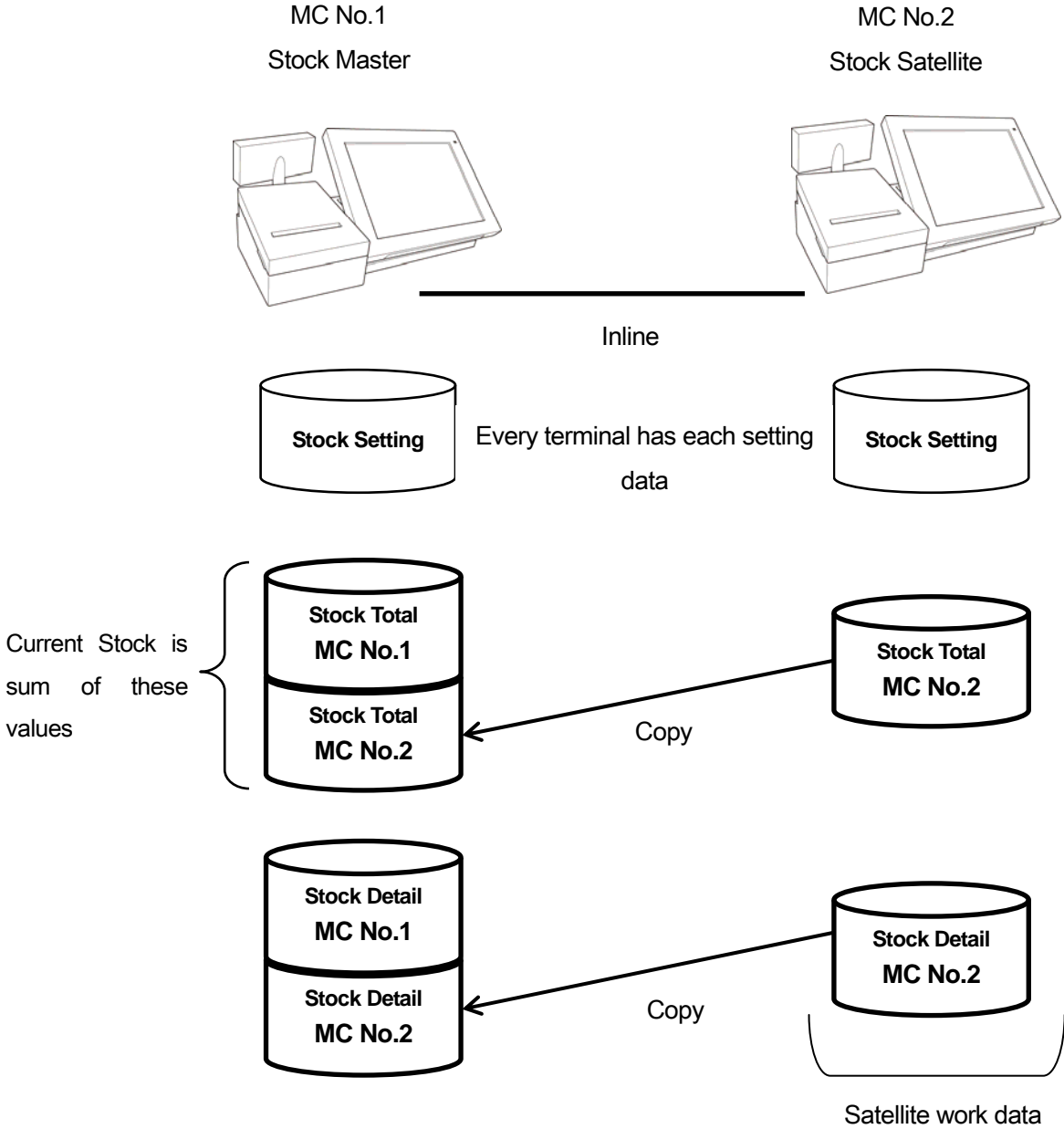
## Target Operation for Shared Stock

Share Target Operation	PLU registration and update current stock (Fin timing) PLU with Stock check (Fin timing) Stock Inquiry. (Fin timing) Stock Report (Recommend Master Terminal operation)
Not Share Operation (Individual Terminal)	Stock Setting.
Not Share Operation (Master only)	Inventory Operation. X/Z with Stock report.

### IMPORTANT

- Timing of indicate "No stock" or "stock minimum" messages will be appeared after you have finalized and register at next transaction.
- Share stock setting "Stock check when registering" will have problem working on NON stable network condition, slow down registration or display "Stock check when registering" dialog. If displayed this message please press Wait key and wait few minutes.

Shared Stock Chart



Shared Stock has Stock Total and Stock Detail on Stock Master. Also in Stock Satellite has Satellite work data and will copy to Stock Master.  
 Current Stock will be calculated on Stock Master Stock Total data.

## 5.2. Setting for Shared Stock

Shared Stock inline setting is same as Check Tracking for Master and Satellite on Control Panel. There is no extra Shared Stock setting for inline. Once set Control Panes, please restart terminal to start Shared Stock Process force.

About Stock setting for inline, please set same setting for all terminals.

To reduce Master load, please set "No detail data" at "Stock control setting" > "Clear stock when Z".

All of "Stock in/out detail" and "Stock in/out total" data are store on Stock Master.

### Important

Please make sure to perform following steps when shared stock function is programmed and going to start use at customer site.

1. Perform OS reboot for all the units connected via inline.
2. Perform function test of shared stock control function according to your programming.
3. Perform "Init2" to clearing stock data which was created during your test.

### 5.3. Operation for Shared Stock

PLU register operation will automatically update current stock value on Stock Master. Also if "Stock check when registering" of General Feature is Yes, PLU register operation will check Stock Master current value and response.

Stock Inquiry operation will get all of Stock data from Stock Master and display list of Current Stock value. Depends on stock data volume, it may takes time.

It is recommended that Stock report operation need to be operated at Stock Master. If it will be operated at Stock Satellite, all of Stock data will be received from Stock Master and create report, but it takes time and chance of timeout if the data is large.

Inventory need to be operated at Stock Master. Also Stock Satellite need to be operated same timing to clear Satellite work data, to count up Inventory number, but Satellite storage data cannot be used.



## 5.4. In case of Error

PLU register operation will send stock information to Master. In case of communication error, the "not-yet-send-data" will be kept and will do automatic retry. Operator does not care communication error.

"PLU with Stock Check" checks Check Master stock data and response whether the stock is zero or less, then communication retrying may slowdown PLU operation. If communication is not available, PLU operation cannot check but can register without check.

Shared Stock uses Shared Check Tracking, then also Check Master down may happen when check operation (for New, NB, Fin) or non-check tracking finalize (for Invoice number). Even if Check Master is cut, Shared Stock communication is not related Check Tracking, then Stock data will send to Stock Master even if Check Master down.

Once used Shared Stock (or Shared Check Tracking) for demonstration or installation, changing of terminal property (Master/Satellite) may cause wrong transmission "not-yet-send-data". Please INIT2 if change terminal property.

### Important

- When you perform "Remove check master", check tracking function will be changed to the stand alone mode but shared stock control function will try to continue work with shared stock master terminal.
- If you change settings for shared check tracking after you have performed actual registration of stock control such as for demo, there is a possibility to remain data internally which were not updated stock master.
- To clearing up such data, please perform Init2 to clear up internal work data.